

**PLEASE CHECK WWW.MOLEX.COM FOR LATEST PART INFORMATION**

**Part Number:** [001460029](#)  
**Status:** **Active**  
**Overview:** [cgrid\\_sl\\_products](#)  
**Description:** 2.54mm (.100") Pitch SL™ Insulation Displacement Connector Assembly, Female, Single Row, Version C, Front Ribs, Wire Size 26, 3.81µm (150µ") Tin/Lead (SnPb), 2 Circuits

**Documents:**

[3D Model](#) [Product Specification PS-70400 \(PDF\)](#)  
[Drawing \(PDF\)](#) [RoHS Certificate of Compliance \(PDF\)](#)

**Agency Certification**

CSA LR19980  
 UL E29179

**General**

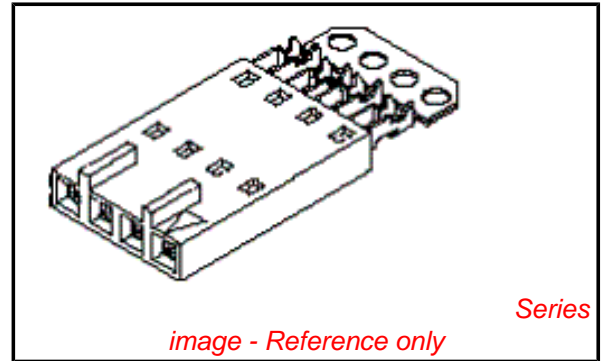
Product Family Ribbon Cable / Wire Trap Connectors  
 Series [70400](#)  
 Comments Terminals Preloaded  
 Component Type Housing  
 Glow-Wire Compliant No  
 Overview [cgrid\\_sl\\_products](#)  
 Product Name SL™

**Physical**

Circuits (Loaded) 2  
 Color - Resin Black  
 Durability (mating cycles max) 25  
 Entry Angle Vertical  
 Flammability 94V-0  
 Lock to Mating Part None  
 Material - Metal Phosphor Bronze  
 Material - Plating Mating Tin  
 Material - Plating Termination Tin  
 Material - Resin Polyester Alloy  
 Number of Rows 1  
 PCB Retention None  
 Packaging Type Tube  
 Pitch - Mating Interface (in) 0.100 In  
 Pitch - Mating Interface (mm) 2.54 mm  
 Plating min: Mating (µin) 150  
 Plating min: Mating (µm) 3.75  
 Plating min: Termination (µin) 75  
 Plating min: Termination (µm) 1.875  
 Polarized to Mating Part Yes  
 Stackable Yes  
 Surface Mount Compatible (SMC) N/A  
 Temperature Range - Operating -40°C to +105°C  
 Termination Interface: Style IDT or Pierce  
 Wire Insulation Diameter 1.35mm (.053") max.  
 Wire Size AWG 26  
 Wire/Cable Type Discrete Wire, Ribbon Cable

**Electrical**

Current - Maximum per Contact 3A  
 Voltage - Maximum 250V



**EU RoHS**

**ELV and RoHS  
 Compliant**  
**REACH SVHC  
 Not Reviewed**  
**Halogen-Free  
 Status  
 Not Reviewed**

**China RoHS**



**Need more information on product  
 environmental compliance?**

Email [productcompliance@molex.com](mailto:productcompliance@molex.com)  
 For a multiple part number RoHS Certificate of Compliance, [click here](#)

Please visit the [Contact Us](#) section for any non-product compliance questions.

**Search Parts in this Series**

[70400Series](#)

**Mates With**

[70544](#), [70546](#), [70554](#), [70556](#)

**Use With**

[7307](#) Tinned 28AWG, [7767](#) Topcoat 28AWG, [24241](#) Tinned 26AWG, [8996](#) Topcoat 26AWG, [24226](#) Tinned 24AWG, [8997](#) Topcoat 24AWG, [24369](#) High Flex 26AWG, [24389](#) High Flex 24AWG

**Application Tooling | FAQ**

*Tooling specifications and manuals are found by selecting the products below. Crimp Height Specifications are then contained in the Application Tooling Specification document.*

**Global**

| Description   | Product #                  |
|---|----------------------------|
| Hawk Semi-Automatic Discrete Wire Terminator for SL - Rebuilt US* | <a href="#">0011201337</a> |

**Material Info**

Old Part Number 70400-0211

**Reference - Drawing Numbers**

Product Specification PS-70400  
Sales Drawing SDA-70400-0211-0234

|   |                   |
|---|-------------------|
| Hawk™ Ribbon  | <u>0623003000</u> |
| Cable Terminator for<br>SL without Break-off        |                   |
| Hawk™ Semi-<br>Automatic Discrete                   | <u>0623004900</u> |
| Wire Terminator<br>for SL - Rebuilt CE<br>Approved* |                   |
| Hawk™ Flat Flex                                     | <u>0623005200</u> |
| Cable Terminator for<br>SL with Break-off           |                   |
| Hawk™ Ribbon  | <u>0623005300</u> |
| Cable Terminator<br>with for SL Break-off           |                   |
| IDT Discrete  | <u>0621000700</u> |
| Handtool Module for<br>SL™                          |                   |
| Hawk™ Semi-<br>Automatic Discrete                   | <u>0623003100</u> |
| Wire Terminator for<br>SL                           |                   |

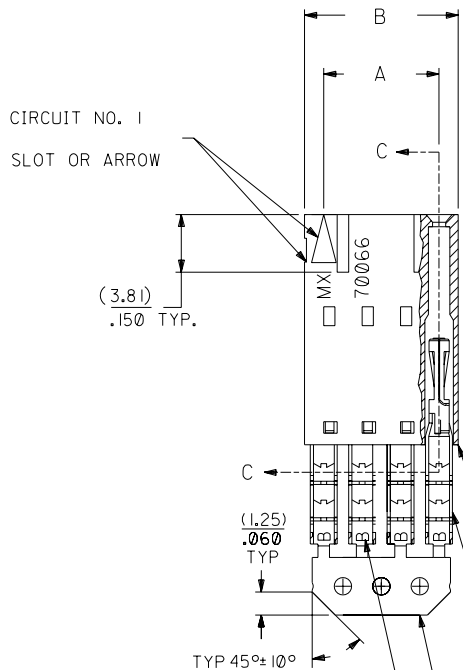
This document was generated on 05/21/2010

**PLEASE CHECK [WWW.MOLEX.COM](http://WWW.MOLEX.COM) FOR LATEST PART INFORMATION**

# OPTION C

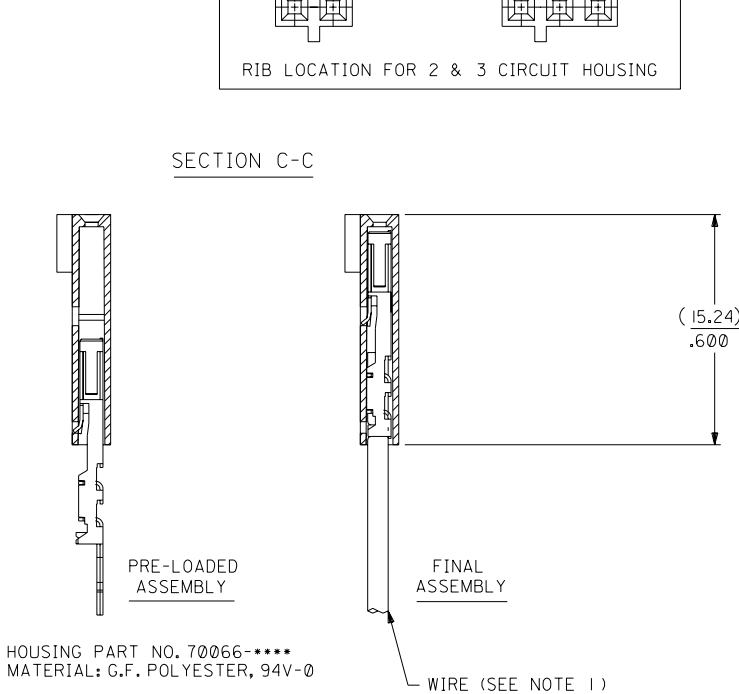
## NOTES:

- TO BE USED WITH (26) AWG. STRANDED WIRE WITH (1.35)/.053 DIA. MAX. INSULATION.
- SEE CHART FOR CIRCUIT SIZES.
- STANDARD PACKAGING PER PK-70400-0001. OPTIONAL PACKAGING MAY BE AVAILABLE, REQUEST DWG. PK-70400
- PARTS STACKABLE END TO END ON (2.54)/.100 CENTERS.
- REFER TO PRODUCT SPECIFICATION: PS-70400.
- SEE DWG. SDA-70400-\*\*\*\* (SHT. 5) FOR OPTIONAL HOUSING DETAILS.
- 4 CIRCUIT SHOWN. 4 - 25 CKT.'S. HAVE (2) RIBS.
- TO MATE WITH MOLEX PART NO.'S.: A-70374-\*\*\*\*, A-70376-\*\*\*\*, A-70390-\*\*\*\*, A-70392-\*\*\*\*, A-70544-\*\*\*\*, A-70554-\*\*\*\*, A-70542-\*\*\*\*, A-70552-\*\*\*\*, A-70546-\*\*\*\*, A-70556-\*\*\*\*.
- 2 CIRCUIT ASSEMBLIES SUPPLIED AS GROUPED PAIRS.



| I.D. SLOT CODE TO WIRE GAUGE CHART |            |
|------------------------------------|------------|
| I.D. SLOT CODE                     | WIRE GAUGE |
| B                                  | 26 AWG.    |

| PLATING CODE (STRIPE ON CARRIER STRIP) |       |
|--|-------|
| PLATING                                | COLOR |
| TIN                                    | NONE  |



HOUSING PART NO. 70066-\*\*\*\*  
MATERIAL: G.F. POLYESTER, 94V-0

TERMINAL PART NO. 70028-\*\*\*\*  
MATERIAL: PHOSPHOR BRONZE  
PLATING PER ES-88-\*\*\*

TIN - .000150 MIN. TIN OVER  
.000050 MIN. NICKEL PLATE.

\*THE PRIMARY SHIPPING CARTON WILL BE LABELED "COMPLIANT TO ROHS DIRECTIVE 2002/95/EC AND ELV ANNEX II OF DIRECTIVE 2000/53/EC". CARTONS WITHOUT THIS LABEL MAY CONTAIN PRODUCT WITH LEAD.

| CKT. SIZE | A                  | B                  | EDP. NO.   | ENG. NO.     |
|-----------|--------------------|--------------------|------------|--------------|
| 2         | ( 2.54 )<br>.100   | ( 5.05 )<br>.199   | 14-60-0029 | A-70400-0211 |
| 3         | ( 5.08 )<br>.200   | ( 7.59 )<br>.299   | 14-60-0039 | A-70400-0212 |
| 4         | ( 7.62 )<br>.300   | ( 10.13 )<br>.399  | 14-60-0049 | A-70400-0213 |
| 5         | ( 10.16 )<br>.400  | ( 12.67 )<br>.499  | 14-60-0059 | A-70400-0214 |
| 6         | ( 12.70 )<br>.500  | ( 15.21 )<br>.599  | 14-60-0069 | A-70400-0215 |
| 7         | ( 15.24 )<br>.600  | ( 17.75 )<br>.699  | 14-60-0079 | A-70400-0216 |
| 8         | ( 17.78 )<br>.700  | ( 20.29 )<br>.799  | 14-60-0089 | A-70400-0217 |
| 9         | ( 20.32 )<br>.800  | ( 22.83 )<br>.899  | 14-60-0099 | A-70400-0218 |
| 10        | ( 22.86 )<br>.900  | ( 25.37 )<br>.999  | 14-60-0109 | A-70400-0219 |
| 11        | ( 25.54 )<br>1.000 | ( 27.91 )<br>1.099 | 14-60-0119 | A-70400-0220 |
| 12        | ( 27.94 )<br>1.100 | ( 30.45 )<br>1.199 | 14-60-0129 | A-70400-0221 |
| 13        | ( 30.48 )<br>1.200 | ( 32.99 )<br>1.299 | 14-60-0139 | A-70400-0222 |
| 14        | ( 33.02 )<br>1.300 | ( 35.53 )<br>1.399 | 14-60-0149 | A-70400-0223 |
| 15        | ( 35.56 )<br>1.400 | ( 38.07 )<br>1.499 | 14-60-0159 | A-70400-0224 |
| 16        | ( 38.01 )<br>1.500 | ( 40.61 )<br>1.599 | 14-60-0169 | A-70400-0225 |
| 17        | ( 40.64 )<br>1.600 | ( 43.15 )<br>1.699 | 14-60-0179 | A-70400-0226 |
| 18        | ( 43.18 )<br>1.700 | ( 45.69 )<br>1.799 | 14-60-0189 | A-70400-0227 |
| 19        | ( 45.72 )<br>1.800 | ( 48.23 )<br>1.899 | 14-60-0199 | A-70400-0228 |
| 20        | ( 48.26 )<br>1.900 | ( 50.77 )<br>1.999 | 14-60-0209 | A-70400-0229 |
| 21        | ( 50.80 )<br>2.000 | ( 53.31 )<br>2.099 | 14-60-0219 | A-70400-0230 |
| 22        | ( 53.34 )<br>2.100 | ( 55.85 )<br>2.199 | 14-60-0229 | A-70400-0231 |
| 23        | ( 55.88 )<br>2.200 | ( 58.39 )<br>2.299 | 14-60-0239 | A-70400-0232 |
| 24        | ( 58.42 )<br>2.300 | ( 60.93 )<br>2.399 | 14-60-0249 | A-70400-0233 |
| 25        | ( 60.96 )<br>2.400 | ( 63.47 )<br>2.499 | 14-60-0259 | A-70400-0234 |

| G  | LEAD FREE<br>UCP2004-1769<br>RWHITE 04/03/17   | E      | REVISED PER<br>ECR NO. U82110<br>10-17-88<br>BJS | DIMENSIONS SHOWN (METRIC) INCH<br>UNLESS OTHERWISE SPECIFIED<br>TOLERANCES: ANGULAR ± 1/2°  |  | ▽ = 0<br>▼ = 0                | REVISE ONLY ON CAD SYSTEM |           |           |   |     |           |        |                     |  |        |     |  |  |  |  |  |  |                    |      |
|--|--|--------|--|---|--|-------------------------------|---------------------------|-----------|-----------|---|-----|-----------|--------|---------------------|--|--------|-----|--|--|--|--|--|--|--------------------|------|
| FI   | ADD CARRIER CHAMF<br>ECN #UDT1998-0280<br>05/20/98 LMCGRATH  | D      | REVISE PER<br>ECR #U80110<br>2/3/88 MJM          | <table border="1"> <thead> <tr> <th>3 PLACE</th> <th>INCH</th> <th>METRIC</th> </tr> </thead> <tbody> <tr> <td>± .010</td> <td>---</td> <td>---</td> </tr> <tr> <td>± .014</td> <td>± 0.25</td> <td>---</td> </tr> <tr> <td>---</td> <td>± 0.35</td> <td>---</td> </tr> </tbody> </table> |  | 3 PLACE                       | INCH                      | METRIC    | ± .010    | ---   | --- | ± .014    | ± 0.25 | ---                 | ---  | ± 0.35 | --- | <table border="1"> <tr> <td colspan="2">ASSEMBLY, SL CONNECTOR<br/>(SINGLE ROW- (2.54)/.100 GRID)</td> </tr> <tr> <td colspan="2">MOLEX INCORPORATED<br/>LITSE, ILL. 60532 U.S.A.</td> </tr> <tr> <td>SHEET NO. 10/09/84</td> <td>DATE</td> </tr> </table> |  | ASSEMBLY, SL CONNECTOR<br>(SINGLE ROW- (2.54)/.100 GRID) |  | MOLEX INCORPORATED<br>LITSE, ILL. 60532 U.S.A. |  | SHEET NO. 10/09/84 | DATE |
| 3 PLACE  | INCH   | METRIC |  |   |  |                               |                           |           |           |   |     |           |        |                     |  |        |     |  |  |  |  |  |  |                    |      |
| ± .010   | ---  | ---    |  |   |  |                               |                           |           |           |   |     |           |        |                     |  |        |     |  |  |  |  |  |  |                    |      |
| ± .014   | ± 0.25   | ---    |  |   |  |                               |                           |           |           |   |     |           |        |                     |  |        |     |  |  |  |  |  |  |                    |      |
| ---  | ± 0.35   | ---    |  |   |  |                               |                           |           |           |   |     |           |        |                     |  |        |     |  |  |  |  |  |  |                    |      |
| ASSEMBLY, SL CONNECTOR<br>(SINGLE ROW- (2.54)/.100 GRID) |  |        |  |   |  |                               |                           |           |           |   |     |           |        |                     |  |        |     |  |  |  |  |  |  |                    |      |
| MOLEX INCORPORATED<br>LITSE, ILL. 60532 U.S.A.           |  |        |  |   |  |                               |                           |           |           |   |     |           |        |                     |  |        |     |  |  |  |  |  |  |                    |      |
| SHEET NO. 10/09/84                                       | DATE   |        |  |   |  |                               |                           |           |           |   |     |           |        |                     |  |        |     |  |  |  |  |  |  |                    |      |
| F  | 164 PLATING WAS<br>102<br>PER ECR # U30941<br>07/07/93 REED  | C      | REDRAWN ON CAD<br>ECR# 8842<br>5/8/86 W.Z.       | <table border="1"> <tr> <td>DRWG. BY WAZ</td> <td>CHK'D. BY WAZ</td> </tr> <tr> <td>APP'D. BY</td> <td>SCALE 4:1</td> </tr> </table>  |  | DRWG. BY WAZ                  | CHK'D. BY WAZ             | APP'D. BY | SCALE 4:1 | <table border="1"> <tr> <td colspan="2">SEE CHART</td> </tr> <tr> <td>FILE NAME S70400CK2</td> <td>THIS DRAWING CONTAINS INFORMATION THAT IS PROPRIETARY TO MOLEX INC. AND SHOULD NOT BE USED WITHOUT WRITTEN PERMISSION.</td> </tr> </table> |     | SEE CHART |        | FILE NAME S70400CK2 | THIS DRAWING CONTAINS INFORMATION THAT IS PROPRIETARY TO MOLEX INC. AND SHOULD NOT BE USED WITHOUT WRITTEN PERMISSION. |        |     |  |  |  |  |  |  |                    |      |
| DRWG. BY WAZ   | CHK'D. BY WAZ  |        |  |   |  |                               |                           |           |           |   |     |           |        |                     |  |        |     |  |  |  |  |  |  |                    |      |
| APP'D. BY  | SCALE 4:1  |        |  |   |  |                               |                           |           |           |   |     |           |        |                     |  |        |     |  |  |  |  |  |  |                    |      |
| SEE CHART  |  |        |  |   |  |                               |                           |           |           |   |     |           |        |                     |  |        |     |  |  |  |  |  |  |                    |      |
| FILE NAME S70400CK2                                      | THIS DRAWING CONTAINS INFORMATION THAT IS PROPRIETARY TO MOLEX INC. AND SHOULD NOT BE USED WITHOUT WRITTEN PERMISSION. |        |  |   |  |                               |                           |           |           |   |     |           |        |                     |  |        |     |  |  |  |  |  |  |                    |      |
| LTR.   | REVISIONS  | LTR.   | REVISIONS  | <table border="1"> <tr> <td>DRWG. NO. SDA-70400-0211-0234</td> <td>DATE 10/09/84</td> </tr> <tr> <td>DIV. DA</td> <td>SIZE C</td> </tr> </table>  |  | DRWG. NO. SDA-70400-0211-0234 | DATE 10/09/84             | DIV. DA   | SIZE C    |   |     |           |        |                     |  |        |     |  |  |  |  |  |  |                    |      |
| DRWG. NO. SDA-70400-0211-0234                            | DATE 10/09/84  |        |  |   |  |                               |                           |           |           |   |     |           |        |                     |  |        |     |  |  |  |  |  |  |                    |      |
| DIV. DA  | SIZE C   |        |  |   |  |                               |                           |           |           |   |     |           |        |                     |  |        |     |  |  |  |  |  |  |                    |      |